

LOCAL VOTERS GUIDE

CHARLESTON COUNTY



Election Day



November 5, 2024

7:00 AM - 7:00 PM

Vote at your polling location.

Get Ready to Vote



Check your voter registration status, find your polling location, and more!

Early Voting



October 21 - November 2 (excluding Sundays)

8:30 AM - 6:00 PM

All Charleston County voters can vote early at any Charleston County early voting location without an excuse.



Downtown - Main Library

68 Calhoun St
Charleston, SC 29401



Mt. Pleasant - Seacoast Church

750 Long Point Rd.
Mount Pleasant, SC 29464



**Hollywood - St. Paul's
Hollywood Library**

5130 SC-165
Hollywood, SC 29449



**North Charleston - Charleston
County Elections HQ**

4340 Corporate Rd.
North Charleston, SC 29405



**James Island - James Island
Baxter-Patrick Library**

1858 S Grimball Rd.
Charleston, SC 29412



**West Ashley - Essex Village
Church of Christ**

736 Savage Rd.
Charleston, SC 29414



**Johns Island - St. John's
Episcopal Church**

3673 Maybank Hwy
Johns Island, SC 29455

Voter Registration Deadlines



In Person

Monday, October 14 at 5:00 PM

Online/E-mail/Fax

Monday, October 14 at 11:59 PM

Mail (Postmark)

Monday, October 14

WHAT'S IN THIS GUIDE?

Voting

- | | |
|-------------------------------|---|
| ✓ How can I register to vote? | 3 |
| ✓ How can I vote? | 4 |
| • Absentee | |
| • Early Voting | |
| • Election Day | |
| ✓ How can I get vote ready? | 5 |
| ✓ Can I vote absentee? | 6 |
| ✓ How do I vote absentee? | 7 |

Getting Informed

- | | |
|----------------------------------|----|
| ✓ Ballot Questions | 8 |
| ✓ Countywide Offices | 9 |
| ✓ County Districted Offices | 12 |
| ✓ Public Service Districts | 13 |
| ✓ County School Boards | 14 |
| ✓ Election Calendar | 16 |
| ✓ How can I help? | 17 |
| • Be an Election Worker | |
| • Adopt a Polling Location | |
| ✓ How can I stay up to date? | 18 |
| ✓ What if I have more questions? | 18 |

HOW CAN I REGISTER TO VOTE?

IN PERSON



You can register to vote at our office during regular business hours.

4340 Corporate Road
North Charleston, SC 29405

Monday - Friday
8:30 AM - 5:00 PM

ONLINE



You can register online if your address with the DMV is your current address at [scvotes.gov](https://www.scvotes.gov) or you can email completed registration forms to our office.

| voterregistration@charlestoncounty.org

BY MAIL



You can mail your completed voter registration form to our office.

PO Box 71419
North Charleston, SC 29415

HOW CAN I VOTE?

ABSENTEE BY MAIL



If you qualify to vote absentee, our office must receive your absentee ballot request by Friday, October 25, at 5:00PM.

Ballots begin getting mailed out 30 days before the election and then are mailed daily as applications are received.

Return your ballot by mail or in person at our office or any Charleston County early voting location.

Ballots must be received by 7:00PM on Election Day.

IN PERSON



Vote Early

You can vote two weeks before the week of the election—no excuse necessary!

If you live in Charleston County, you can cast your ballot at any early voting location in Charleston County starting Monday, October 21.



For more details, visit us at chsvotes.gov.



Vote on Election Day



Polls are open on Election Day, Tuesday November 5, from 7:00 AM to 7:00 PM.

Find your polling place at scvotes.gov.

HOW CAN I GET VOTE READY?



Register to Vote or Update Your Voter Registration

If you've already registered to vote, make sure your voter registration information is up to date.



Check your voter registration before October. To be eligible to vote in an election, you have to register in your county at least 30 days before Election Day.



Review Your Sample Ballot

Head to scvotes.gov to view your sample ballot and voting districts.



Know the Where, How, and When

Where can I vote?

- Contact your county board of elections to learn about early voting centers. Visit scvotes.gov to see your Election Day polling location.

How are you getting to your polling location?

- Look up directions for driving, public transit, biking, or walking.

When are you planning to vote?

- Set a time to cast your vote!



Head to the Polls and Vote!

Make sure to bring your valid, unexpired photo ID.



Head to scvotes.gov to view your sample ballot, update your voter registration, find your Election Day polling location, and more!

CAN I VOTE ABSENTEE?

Qualifications for absentee voting changed in 2022. Review the qualifications below before requesting an absentee application.

You can vote absentee by mail if you fall under one of the following:

- Physically disabled
- 65 or older
- A member of the Armed Forces and Merchant Marines, a spouse, or a dependent that lives with them
- Admitted to a hospital as an emergency patient within four days of an election or on Election Day

You can vote absentee by mail if you can't vote during the early voting period or on Election Day and fall under one of the following:

- Have employment conflicts
- Will be caring for someone who is sick or physically disabled
- Are confined to a jail or pretrial facility pending the disposition of an arrest or trial
- Will be absent from Charleston County

HOW DO I VOTE ABSENTEE?

1

Request an absentee ballot application.

You can request an application at our office, by phone, or by mail.

2

Receive and complete your application.

If you would like to receive your ballot at a different location than your registered address, be sure to add a mailing address.

3

Return your absentee ballot application.

You can return your application by:

- Mail.
- In person at our office.



Our office must receive your application by Friday, October 25, at 5:00PM.

4

Receive and fill out your ballot.

Ballots are sent out starting 30 days before the election.

When filling out your ballot:

- Make sure you have clearly marked your selections.
- Fill out all of the sections on the outer envelope.

5

Return your ballot.

Ballots can be returned in two ways:

- By mail.
- In person at our office or at any early voting center in Charleston County during early voting hours.



- **Our office must receive your ballot before 7:00 PM on Election Day.**
- **Postmarks do not apply to mail-in ballots.**
- **Absentee ballots cannot be accepted at polling locations on Election Day. If you have waited until Election Day to return your ballot, you must return it to our office by 7:00 PM.**

BALLOT QUESTIONS

Statewide Constitutional Amendment

Must Section 4, Article II of the Constitution of this State, relating to voter qualifications, be amended so as to provide that only a citizen of the United States and of this State of the age of eighteen and upwards who is properly registered is entitled to vote as provided by law?

- Yes, in favor of the question
 No, opposed to the question

Charleston County Ballot Referendums

Question 1

I approve a special sales and use tax in the amount of one-half ($\frac{1}{2}$) of one percent to be imposed in Charleston County for not more than twenty-five (25) years, or until a total of \$5,400,000,000 in resulting revenue has been collected, whichever occurs first. The sales tax proceeds will be used to fund the following projects:

- Project (1) For financing the costs of highways, roads, streets, bridges, and other transportation-related projects facilities, and drainage facilities related thereto, and mass transit systems operated by Charleston County or jointly operated by the County and other governmental entities. \$4,968,000,000.
- Project (2) For financing the costs of greenbelts. \$432,000,000.

- Yes
 No

Question 2

I approve the issuance of not exceeding \$ 1,000,000,000 of general obligation bonds of Charleston County, payable from the special sales and use tax described in Question 1 above, maturing over a period not to exceed twenty-five (25) years, to fund completion of projects from among the categories described in Question 1 above.

- Yes
 No



COUNTYWIDE OFFICES

These offices serve all Charleston County citizens regardless of where they live within the County.

Auditor



The Auditor is responsible for the taxes on real estate, mobile homes, motor vehicles, watercraft, aircraft, and business-owned personal property. They oversee the preparation of over 750,000 property tax bills annually.

Four-Year Term

Partisan

Clerk of Court



The Clerk of Court is responsible for keeping records for Common Pleas, General Sessions, and Family Courts. They also ensure that cases are managed properly and handle financial duties related to the courts.

Four-Year Term

Partisan

Coroner



The Coroner ensures that there is a proper investigation of the deaths of all Charleston County citizens. They serve as a representative of the deceased and their families, keeping them informed of the status of the investigation into a family member's death.

Four-Year Term

Partisan

COUNTYWIDE OFFICES

These offices serve all Charleston County citizens regardless of where they live within the County.

Sheriff



The Sheriff deals with law enforcement, detention, court security, and homeland security. They also enforce state law and oversee the detention center.

Four-Year Term

Partisan

Treasurer



The Treasurer holds internal funds for the County, using funds to generate revenue through interest on investments. The Treasurer also distributes tax revenue to the county, municipalities, schools, and special taxing districts.

Four-Year Term

Partisan

Soil and Water Commission



The Soil and Water Commission reserves and enhances water quality, working farms, natural areas, and wildlife through locally-led conservation efforts.

The Commission has five commissioners. Three are elected and two are appointed by the South Carolina Department of Natural Resources Board.

Four-Year Term

Nonpartisan

COUNTYWIDE OFFICES

These offices serve all Charleston County citizens regardless of where they live within the County.

Solicitor



The Solicitor is the main lawyer that prosecutes criminal cases within a judicial circuit. They decide whether to press charges, offer plea deals, or take cases to trial.

There are sixteen judicial districts in South Carolina. Charleston County and Berkeley County make up the ninth district.

Four-Year Term

Partisan



COUNTY DISTRICTED OFFICES

These elected officials represent you based on where you live within Charleston County.

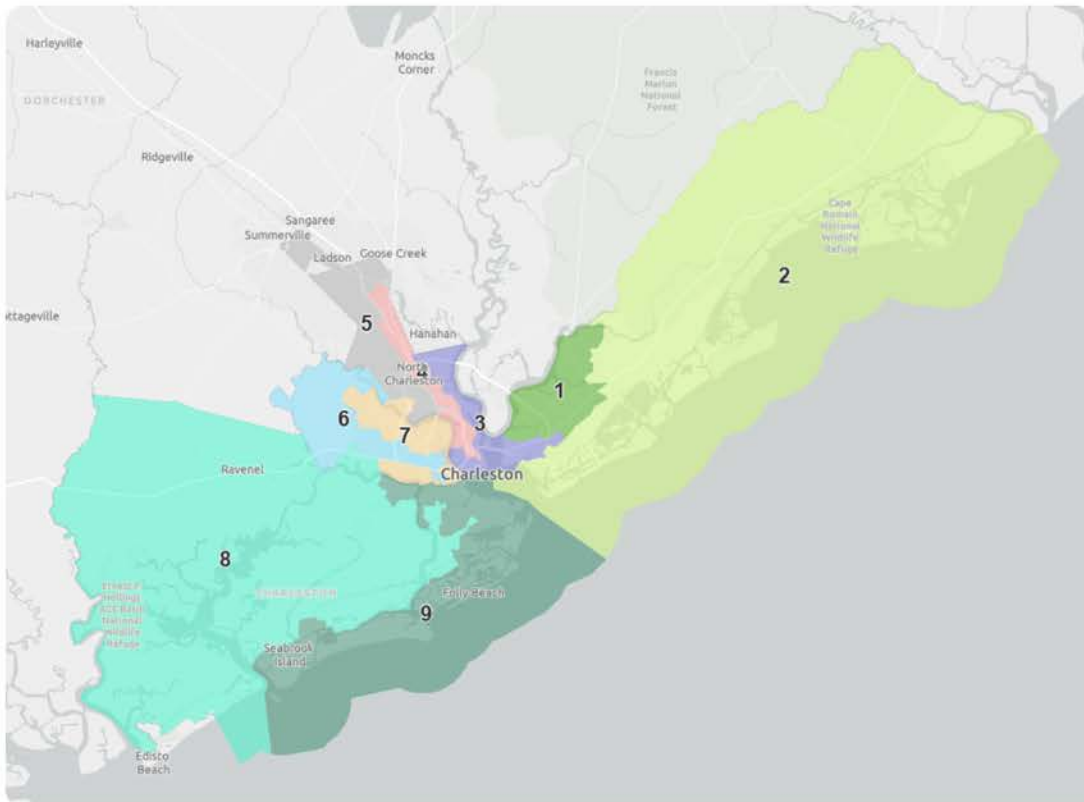
County Council

County Council can enact, repeal, and amend local public laws in addition to approving the County's budget, providing public services, and representing the interests of the people who live within their district.

There are nine county council districts in Charleston County.

Four-Year Staggered Terms

Partisan



PUBLIC SERVICE DISTRICTS

Public Service Districts provide services like fire protection, and sewage treatment in areas where a government body does not offer them.

St. Andrews Public Service District (SAPSD)

St. Andrews PSD provides fire protection, emergency response, environmental services, and street lighting.

The SAPSD is separated into two areas. Two commissioners represent each area and one commissioner serves the district at large.*

Four-Year Staggered Terms

Nonpartisan

James Island Public Service District (JIPSD)

James Island PSD provides fire protection, solid waste management, and wastewater services.

The seven commissioners that make up the JIPSD serve the district at large.*

Four-Year Staggered Terms

Nonpartisan

***At Large-** The entire population in an area, rather than a subset.

COUNTY SCHOOL BOARDS

These elected officials represent you based on where you live within Charleston County.

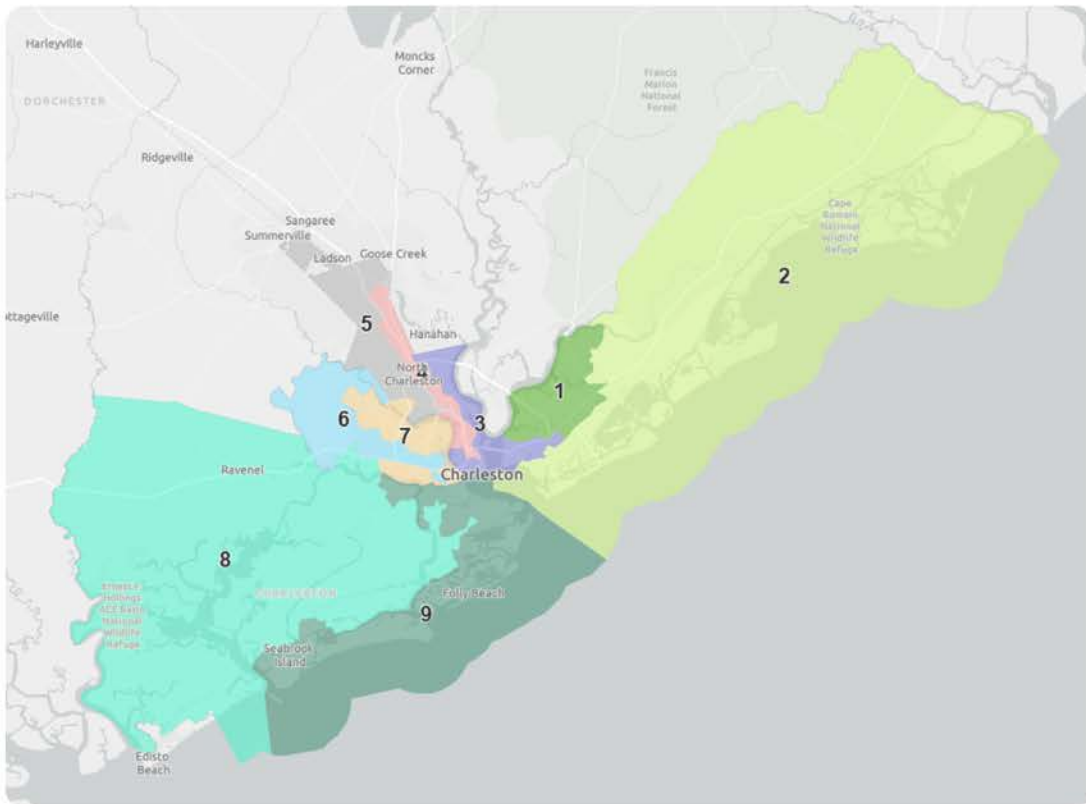
Board of Trustees

The Board of Trustees is responsible for Charleston County School District policies, budget, educational content, and community relations.

The Board of Trustees has nine districts that align with the Charleston County Council Districts.

Four-Year Staggered Terms

Nonpartisan



COUNTY SCHOOL BOARDS

These elected officials represent you based on where you live within Charleston County.

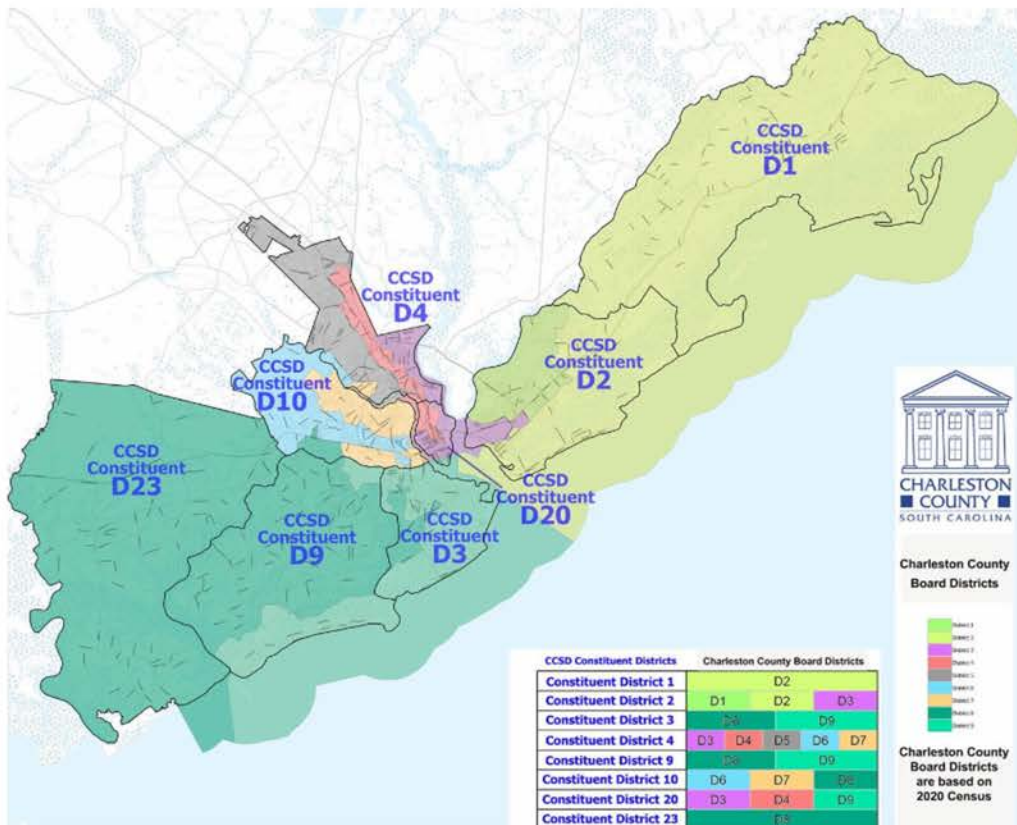
Constituent School Board

The Constituent School Board oversees student transfers, school zones, and discipline.

The Constituent School Board has eight districts. Some board members serve a specific area within a district or serve the district at large.

Four-Year Staggered Terms







Nonpartisan



ELECTION CALENDAR

OCTOBER 2024

		1	2	3	4	5
6	7	8	9	10	11	12
13	14	15	16	17	18	19
20	21	22	23	24	25	26
27	28	29	30	31		

-  Voter Registration Deadline
 - In Person by 5:00PM
 - Online/E-mail/Fax by 11:59PM
 - Postmarked by October 14
-  Absentee ballots begin to be mailed out.
-  Early Voting
-  Absentee Mail Ballot Request Deadline
-  Election Day
-  Absentee ballots must be received by 7:00PM.

NOVEMBER 2024

					1	2
3	4	5	6	7	8	9
10	11	12	13	14	15	16
17	18	19	20	21	22	23
24	25	26	27	28	29	30

HOW CAN I HELP?

Be an Election Worker

Our elections would not be possible without the support of election workers. As an election worker, you can:

- ✓ Serve your community
- ✓ Get involved in the election process
- ✓ Earn \$250



Apply to be an election worker today!

Visit us at chsvotes.gov or scan the QR code.



HOW CAN I HELP?

Adopt a Polling Location

On Election Day, your organization or business can adopt a polling location by providing staff to serve as election workers.

Rather than paying each election worker individually, we will issue a single check to your business or organization to reinvest in the community.

Benefits

- ✓ You can earn up to \$2,500 for each polling location adopted.
- ✓ You can highlight your business or organization's work.
- ✓ Tax dollars are reinvested in the community.



For more information and to apply, visit us at chsvotes.gov or scan the QR code.



HOW CAN I STAY UP TO DATE?

Follow us on social media for updates on election news and more!



@charlestonvotes



@chsvotes



@charlestonvotes

WHAT IF I HAVE MORE QUESTIONS?

Reach out to us!

Charleston County Board of Voter Registration and Elections



(843) 744-8683



bevr@charlestoncounty.org



chsvotes.gov



Office Address

4340 Corporate Road
North Charleston, SC 29405



Mailing Address

PO Box 71419
North Charleston, SC 29415

Monday - Friday
8:30AM - 5:00PM

