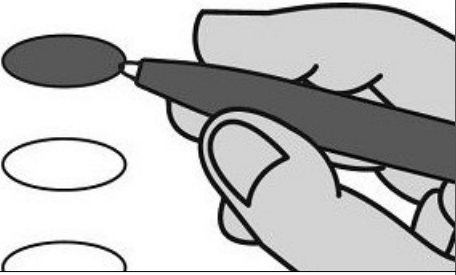


11  
**OFFICIAL BALLOT - CHARLESTON COUNTY, SC  
DEMOCRATIC PRIMARY  
JANUARY 21, 2025**

**EMERGENCY/  
PROVISIONAL  
DEER PARK 1B  
B001**

**Instructions**

21  
**Marking Your Ballot**



- 40  
41  
42  
43
- To vote, darken the oval beside your choice using a blue or black pen. Do not make marks outside the oval.
  - Vote for one candidate in each contest unless otherwise indicated.
  - You do not have to vote in every contest.
  - To change or correct your ballot, request a replacement from the election official.

**State House of Representatives  
District 113  
Vote for One**

- 51
- Michelle Brandt
  - Kim Clark
  - Courtney Waters

A handwritten signature in cursive script, reading "Howard M. Knapp".

Howard M. Knapp  
Executive Director  
South Carolina Election Commission

**ATTENTION VOTER: DO NOT REMOVE STUB FROM BALLOT**

**OFFICIAL BALLOT - CHARLESTON COUNTY, SC  
DEMOCRATIC PRIMARY  
JANUARY 21, 2025**

**EMERGENCY/  
PROVISIONAL  
DEER PARK 1B  
B001**

No. \_\_\_\_\_

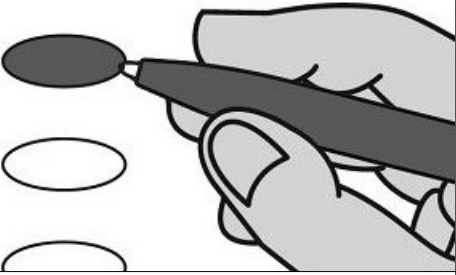
\_\_\_\_\_  
Initials of Issuing Officer

OFFICIAL BALLOT - CHARLESTON COUNTY, SC  
DEMOCRATIC PRIMARY  
JANUARY 21, 2025

EMERGENCY/  
PROVISIONAL  
DEER PARK 2A  
B002

Instructions

Marking Your Ballot



- To vote, darken the oval beside your choice using a blue or black pen. Do not make marks outside the oval.
- Vote for one candidate in each contest unless otherwise indicated.
- You do not have to vote in every contest.
- To change or correct your ballot, request a replacement from the election official.

State House of Representatives  
District 113  
Vote for One

- Michelle Brandt
- Kim Clark
- Courtney Waters

Howard M. Knapp  
Executive Director  
South Carolina Election Commission

ATTENTION VOTER: DO NOT REMOVE STUB FROM BALLOT

OFFICIAL BALLOT - CHARLESTON COUNTY, SC  
DEMOCRATIC PRIMARY  
JANUARY 21, 2025

EMERGENCY/  
PROVISIONAL  
DEER PARK 2A  
B002

No. \_\_\_\_\_

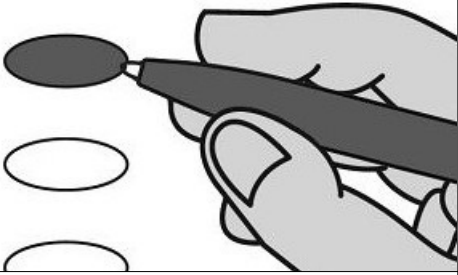
\_\_\_\_\_  
Initials of Issuing Officer

11  
**OFFICIAL BALLOT - CHARLESTON COUNTY, SC  
DEMOCRATIC PRIMARY  
JANUARY 21, 2025**

**EMERGENCY/  
PROVISIONAL  
DEER PARK 2B  
B003**

**Instructions**

21  
**Marking Your Ballot**



- To vote, darken the oval beside your choice using a blue or black pen. Do not make marks outside the oval.
- Vote for one candidate in each contest unless otherwise indicated.
- You do not have to vote in every contest.
- To change or correct your ballot, request a replacement from the election official.

**State House of Representatives  
District 113  
Vote for One**

- Michelle Brandt
- 53  Kim Clark
- Courtney Waters

A handwritten signature in cursive script, reading "Howard M. Knapp".

Howard M. Knapp  
Executive Director  
South Carolina Election Commission

**ATTENTION VOTER: DO NOT REMOVE STUB FROM BALLOT**

**OFFICIAL BALLOT - CHARLESTON COUNTY, SC  
DEMOCRATIC PRIMARY  
JANUARY 21, 2025**

**EMERGENCY/  
PROVISIONAL  
DEER PARK 2B  
B003**

No. \_\_\_\_\_

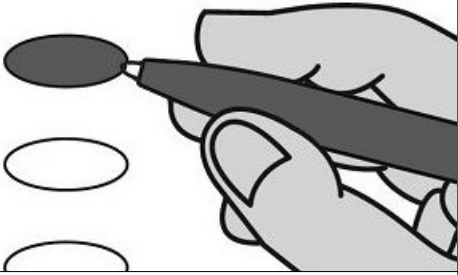
\_\_\_\_\_  
Initials of Issuing Officer

OFFICIAL BALLOT - CHARLESTON COUNTY, SC  
DEMOCRATIC PRIMARY  
JANUARY 21, 2025

EMERGENCY/  
PROVISIONAL  
LINCOLNVILLE  
B004

**Instructions**

**Marking Your Ballot**



- To vote, darken the oval beside your choice using a blue or black pen. Do not make marks outside the oval.
- Vote for one candidate in each contest unless otherwise indicated.
- You do not have to vote in every contest.
- To change or correct your ballot, request a replacement from the election official.

**State House of Representatives  
District 113  
Vote for One**

- Michelle Brandt
- Kim Clark
- Courtney Waters

Howard M. Knapp  
Executive Director  
South Carolina Election Commission

**ATTENTION VOTER: DO NOT REMOVE STUB FROM BALLOT**

OFFICIAL BALLOT - CHARLESTON COUNTY, SC  
DEMOCRATIC PRIMARY  
JANUARY 21, 2025

EMERGENCY/  
PROVISIONAL  
LINCOLNVILLE  
B004

No. \_\_\_\_\_

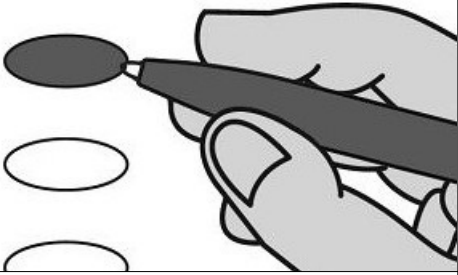
\_\_\_\_\_  
Initials of Issuing Officer

OFFICIAL BALLOT - CHARLESTON COUNTY, SC  
DEMOCRATIC PRIMARY  
JANUARY 21, 2025

EMERGENCY/  
PROVISIONAL  
LADSON  
B005

**Instructions**

**Marking Your Ballot**



- To vote, darken the oval beside your choice using a blue or black pen. Do not make marks outside the oval.
- Vote for one candidate in each contest unless otherwise indicated.
- You do not have to vote in every contest.
- To change or correct your ballot, request a replacement from the election official.

**State House of Representatives  
District 113  
Vote for One**

- Michelle Brandt
- Kim Clark
- Courtney Waters

Howard M. Knapp  
Executive Director  
South Carolina Election Commission

**ATTENTION VOTER: DO NOT REMOVE STUB FROM BALLOT**

OFFICIAL BALLOT - CHARLESTON COUNTY, SC  
DEMOCRATIC PRIMARY  
JANUARY 21, 2025

EMERGENCY/  
PROVISIONAL  
LADSON  
B005

No. \_\_\_\_\_

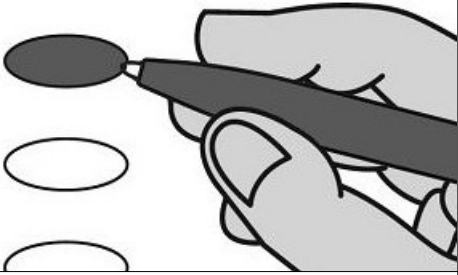
\_\_\_\_\_  
Initials of Issuing Officer

11  
**OFFICIAL BALLOT - CHARLESTON COUNTY, SC  
DEMOCRATIC PRIMARY  
JANUARY 21, 2025**

**EMERGENCY/  
PROVISIONAL  
NORTH CHARLESTON 5  
B006**

**Instructions**

21 **Marking Your Ballot**



- To vote, darken the oval beside your choice using a blue or black pen. Do not make marks outside the oval.
- Vote for one candidate in each contest unless otherwise indicated.
- You do not have to vote in every contest.
- To change or correct your ballot, request a replacement from the election official.

**State House of Representatives  
District 113  
Vote for One**

- 52
- Michelle Brandt
  - Kim Clark
  - Courtney Waters

Howard M. Knapp  
Executive Director  
South Carolina Election Commission

**ATTENTION VOTER: DO NOT REMOVE STUB FROM BALLOT**

**OFFICIAL BALLOT - CHARLESTON COUNTY, SC  
DEMOCRATIC PRIMARY  
JANUARY 21, 2025**

**EMERGENCY/  
PROVISIONAL  
NORTH  
CHARLESTON 5  
B006**

No. \_\_\_\_\_

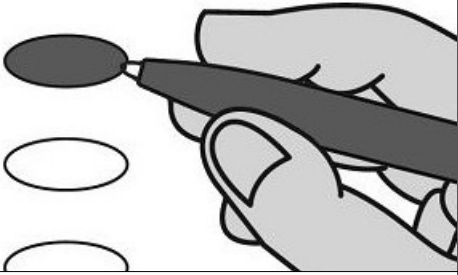
\_\_\_\_\_  
Initials of Issuing Officer

11  
**OFFICIAL BALLOT - CHARLESTON COUNTY, SC  
DEMOCRATIC PRIMARY  
JANUARY 21, 2025**

**EMERGENCY/  
PROVISIONAL  
NORTH CHARLESTON 7  
B007**

**Instructions**

21 **Marking Your Ballot**



- To vote, darken the oval beside your choice using a blue or black pen. Do not make marks outside the oval.
- Vote for one candidate in each contest unless otherwise indicated.
- You do not have to vote in every contest.
- To change or correct your ballot, request a replacement from the election official.

**State House of Representatives  
District 113  
Vote for One**

- Michelle Brandt
- 53  Kim Clark
- Courtney Waters

Howard M. Knapp  
Executive Director  
South Carolina Election Commission

**ATTENTION VOTER: DO NOT REMOVE STUB FROM BALLOT**

**OFFICIAL BALLOT - CHARLESTON COUNTY, SC  
DEMOCRATIC PRIMARY  
JANUARY 21, 2025**

**EMERGENCY/  
PROVISIONAL  
NORTH  
CHARLESTON 7  
B007**

No. \_\_\_\_\_

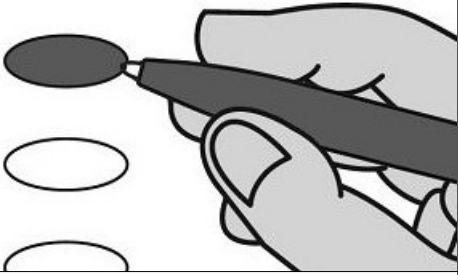
\_\_\_\_\_  
Initials of Issuing Officer

11  
**OFFICIAL BALLOT - CHARLESTON COUNTY, SC  
DEMOCRATIC PRIMARY  
JANUARY 21, 2025**

**EMERGENCY/  
PROVISIONAL  
NORTH CHARLESTON 8  
B008**

**Instructions**

21 **Marking Your Ballot**



- To vote, darken the oval beside your choice using a blue or black pen. Do not make marks outside the oval.
- Vote for one candidate in each contest unless otherwise indicated.
- You do not have to vote in every contest.
- To change or correct your ballot, request a replacement from the election official.

**State House of Representatives  
District 113  
Vote for One**

- Michelle Brandt
- Kim Clark
- Courtney Waters

Howard M. Knapp  
Executive Director  
South Carolina Election Commission

**ATTENTION VOTER: DO NOT REMOVE STUB FROM BALLOT**

**OFFICIAL BALLOT - CHARLESTON COUNTY, SC  
DEMOCRATIC PRIMARY  
JANUARY 21, 2025**

**EMERGENCY/  
PROVISIONAL  
NORTH  
CHARLESTON 8  
B008**

No. \_\_\_\_\_

\_\_\_\_\_  
Initials of Issuing Officer

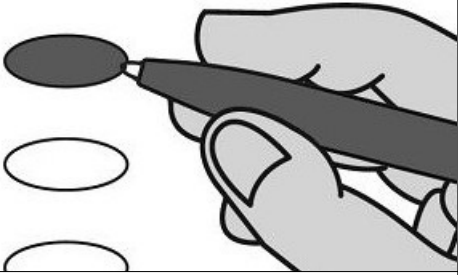


11  
**OFFICIAL BALLOT - CHARLESTON COUNTY, SC  
DEMOCRATIC PRIMARY  
JANUARY 21, 2025**

**EMERGENCY/  
PROVISIONAL  
NORTH CHARLESTON 9  
B009**

**Instructions**

21  
**Marking Your Ballot**



- To vote, darken the oval beside your choice using a blue or black pen. Do not make marks outside the oval.
- Vote for one candidate in each contest unless otherwise indicated.
- You do not have to vote in every contest.
- To change or correct your ballot, request a replacement from the election official.

40  
41  
42  
45  
**State House of Representatives  
District 113  
Vote for One**

- 51
- Michelle Brandt
  - Kim Clark
  - Courtney Waters

Howard M. Knapp  
Executive Director  
South Carolina Election Commission

**ATTENTION VOTER: DO NOT REMOVE STUB FROM BALLOT**

**OFFICIAL BALLOT - CHARLESTON COUNTY, SC  
DEMOCRATIC PRIMARY  
JANUARY 21, 2025**

**EMERGENCY/  
PROVISIONAL  
NORTH  
CHARLESTON 9  
B009**

No. \_\_\_\_\_

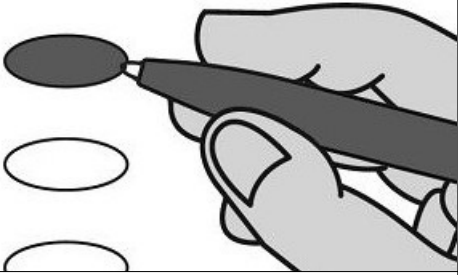
\_\_\_\_\_  
Initials of Issuing Officer

11  
**OFFICIAL BALLOT - CHARLESTON COUNTY, SC  
DEMOCRATIC PRIMARY  
JANUARY 21, 2025**

**EMERGENCY/  
PROVISIONAL  
NORTH CHARLESTON 10  
B010**

**Instructions**

21  
**Marking Your Ballot**



- To vote, darken the oval beside your choice using a blue or black pen. Do not make marks outside the oval.
- Vote for one candidate in each contest unless otherwise indicated.
- You do not have to vote in every contest.
- To change or correct your ballot, request a replacement from the election official.

**State House of Representatives  
District 113  
Vote for One**

- 52
- Michelle Brandt
  - Kim Clark
  - Courtney Waters

A handwritten signature in cursive script, reading "Howard M. Knapp".

Howard M. Knapp  
Executive Director  
South Carolina Election Commission

**ATTENTION VOTER: DO NOT REMOVE STUB FROM BALLOT**

**OFFICIAL BALLOT - CHARLESTON COUNTY, SC  
DEMOCRATIC PRIMARY  
JANUARY 21, 2025**

**EMERGENCY/  
PROVISIONAL  
NORTH  
CHARLESTON 10  
B010**

No. \_\_\_\_\_

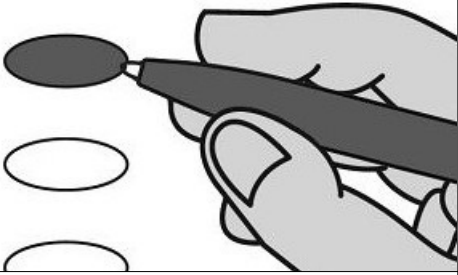
\_\_\_\_\_  
Initials of Issuing Officer

11  
**OFFICIAL BALLOT - CHARLESTON COUNTY, SC  
DEMOCRATIC PRIMARY  
JANUARY 21, 2025**

**EMERGENCY/  
PROVISIONAL  
NORTH CHARLESTON 11  
B011**

**Instructions**

21 **Marking Your Ballot**



- To vote, darken the oval beside your choice using a blue or black pen. Do not make marks outside the oval.
- Vote for one candidate in each contest unless otherwise indicated.
- You do not have to vote in every contest.
- To change or correct your ballot, request a replacement from the election official.

**State House of Representatives  
District 113  
Vote for One**

- Michelle Brandt
- 53  Kim Clark
- Courtney Waters

Howard M. Knapp  
Executive Director  
South Carolina Election Commission

**ATTENTION VOTER: DO NOT REMOVE STUB FROM BALLOT**

**OFFICIAL BALLOT - CHARLESTON COUNTY, SC  
DEMOCRATIC PRIMARY  
JANUARY 21, 2025**

**EMERGENCY/  
PROVISIONAL  
NORTH  
CHARLESTON 11  
B011**

No. \_\_\_\_\_

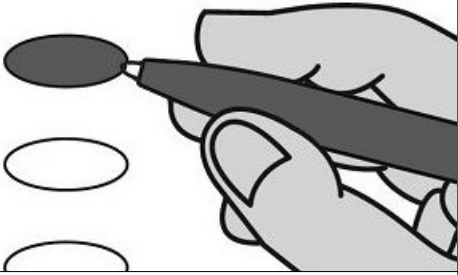
\_\_\_\_\_  
Initials of Issuing Officer

11  
**OFFICIAL BALLOT - CHARLESTON COUNTY, SC  
DEMOCRATIC PRIMARY  
JANUARY 21, 2025**

**EMERGENCY/  
PROVISIONAL  
NORTH CHARLESTON 12  
B012**

**Instructions**

21 **Marking Your Ballot**



- To vote, darken the oval beside your choice using a blue or black pen. Do not make marks outside the oval.
- Vote for one candidate in each contest unless otherwise indicated.
- You do not have to vote in every contest.
- To change or correct your ballot, request a replacement from the election official.

**State House of Representatives  
District 113  
Vote for One**

- Michelle Brandt
- Kim Clark
- Courtney Waters

Howard M. Knapp  
Executive Director  
South Carolina Election Commission

**ATTENTION VOTER: DO NOT REMOVE STUB FROM BALLOT**

**OFFICIAL BALLOT - CHARLESTON COUNTY, SC  
DEMOCRATIC PRIMARY  
JANUARY 21, 2025**

**EMERGENCY/  
PROVISIONAL  
NORTH  
CHARLESTON 12  
B012**

No. \_\_\_\_\_

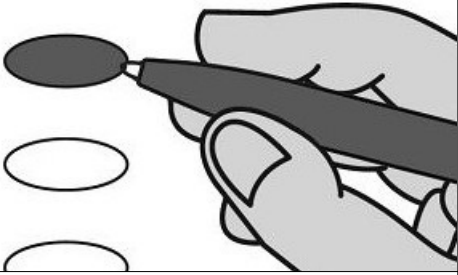
\_\_\_\_\_  
Initials of Issuing Officer

11  
**OFFICIAL BALLOT - CHARLESTON COUNTY, SC  
DEMOCRATIC PRIMARY  
JANUARY 21, 2025**

**EMERGENCY/  
PROVISIONAL  
NORTH CHARLESTON 13  
B013**

21  
**Instructions**

**Marking Your Ballot**



- To vote, darken the oval beside your choice using a blue or black pen. Do not make marks outside the oval.
- Vote for one candidate in each contest unless otherwise indicated.
- You do not have to vote in every contest.
- To change or correct your ballot, request a replacement from the election official.

40  
41  
42  
46  
**State House of Representatives  
District 113  
Vote for One**

- 51
- Michelle Brandt
  - Kim Clark
  - Courtney Waters

Howard M. Knapp  
Executive Director  
South Carolina Election Commission

**ATTENTION VOTER: DO NOT REMOVE STUB FROM BALLOT**

**OFFICIAL BALLOT - CHARLESTON COUNTY, SC  
DEMOCRATIC PRIMARY  
JANUARY 21, 2025**

**EMERGENCY/  
PROVISIONAL  
NORTH  
CHARLESTON 13  
B013**

No. \_\_\_\_\_

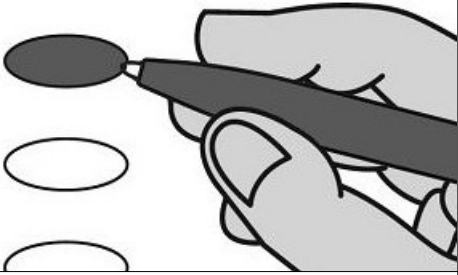
\_\_\_\_\_  
Initials of Issuing Officer

11  
**OFFICIAL BALLOT - CHARLESTON COUNTY, SC  
DEMOCRATIC PRIMARY  
JANUARY 21, 2025**

**EMERGENCY/  
PROVISIONAL  
NORTH CHARLESTON 14  
B014**

**Instructions**

21 **Marking Your Ballot**



- To vote, darken the oval beside your choice using a blue or black pen. Do not make marks outside the oval.
- Vote for one candidate in each contest unless otherwise indicated.
- You do not have to vote in every contest.
- To change or correct your ballot, request a replacement from the election official.

40  
41  
42  
46  
**State House of Representatives  
District 113  
Vote for One**

- 52
- Michelle Brandt
  - Kim Clark
  - Courtney Waters

Howard M. Knapp  
Executive Director  
South Carolina Election Commission

**ATTENTION VOTER: DO NOT REMOVE STUB FROM BALLOT**

**OFFICIAL BALLOT - CHARLESTON COUNTY, SC  
DEMOCRATIC PRIMARY  
JANUARY 21, 2025**

**EMERGENCY/  
PROVISIONAL  
NORTH  
CHARLESTON 14  
B014**

No. \_\_\_\_\_

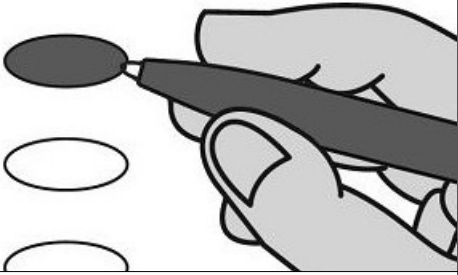
\_\_\_\_\_  
Initials of Issuing Officer

OFFICIAL BALLOT - CHARLESTON COUNTY, SC  
DEMOCRATIC PRIMARY  
JANUARY 21, 2025

EMERGENCY/  
PROVISIONAL  
NORTH CHARLESTON 15  
B015

**Instructions**

**Marking Your Ballot**



- To vote, darken the oval beside your choice using a blue or black pen. Do not make marks outside the oval.
- Vote for one candidate in each contest unless otherwise indicated.
- You do not have to vote in every contest.
- To change or correct your ballot, request a replacement from the election official.

**State House of Representatives  
District 113  
Vote for One**

- Michelle Brandt
- Kim Clark
- Courtney Waters

Howard M. Knapp  
Executive Director  
South Carolina Election Commission

**ATTENTION VOTER: DO NOT REMOVE STUB FROM BALLOT**

OFFICIAL BALLOT - CHARLESTON COUNTY, SC  
DEMOCRATIC PRIMARY  
JANUARY 21, 2025

EMERGENCY/  
PROVISIONAL  
NORTH  
CHARLESTON 15  
B015

No. \_\_\_\_\_

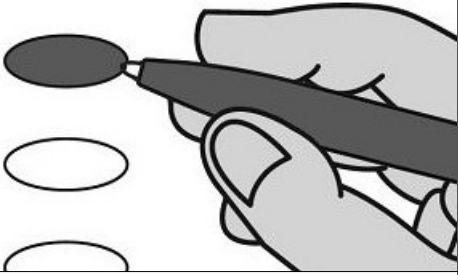
\_\_\_\_\_  
Initials of Issuing Officer

11  
**OFFICIAL BALLOT - CHARLESTON COUNTY, SC  
DEMOCRATIC PRIMARY  
JANUARY 21, 2025**

**EMERGENCY/  
PROVISIONAL  
NORTH CHARLESTON 16  
B016**

**Instructions**

21  
**Marking Your Ballot**



- To vote, darken the oval beside your choice using a blue or black pen. Do not make marks outside the oval.
- Vote for one candidate in each contest unless otherwise indicated.
- You do not have to vote in every contest.
- To change or correct your ballot, request a replacement from the election official.

40  
41  
42  
46  
**State House of Representatives  
District 113  
Vote for One**

- Michelle Brandt
- Kim Clark
- Courtney Waters

Howard M. Knapp  
Executive Director  
South Carolina Election Commission

**ATTENTION VOTER: DO NOT REMOVE STUB FROM BALLOT**

**OFFICIAL BALLOT - CHARLESTON COUNTY, SC  
DEMOCRATIC PRIMARY  
JANUARY 21, 2025**

**EMERGENCY/  
PROVISIONAL  
NORTH  
CHARLESTON 16  
B016**

No. \_\_\_\_\_

\_\_\_\_\_  
Initials of Issuing Officer

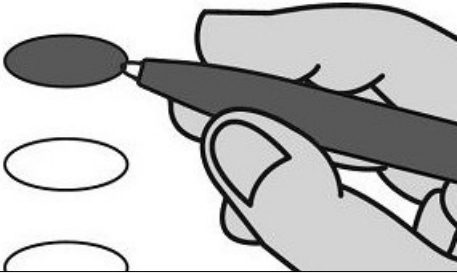


OFFICIAL BALLOT - CHARLESTON COUNTY, SC  
DEMOCRATIC PRIMARY  
JANUARY 21, 2025

EMERGENCY/  
PROVISIONAL  
NORTH CHARLESTON 17  
B017

**Instructions**

**Marking Your Ballot**



- To vote, darken the oval beside your choice using a blue or black pen. Do not make marks outside the oval.
- Vote for one candidate in each contest unless otherwise indicated.
- You do not have to vote in every contest.
- To change or correct your ballot, request a replacement from the election official.

**State House of Representatives  
District 113  
Vote for One**

- Michelle Brandt
- Kim Clark
- Courtney Waters

Howard M. Knapp  
Executive Director  
South Carolina Election Commission

**ATTENTION VOTER: DO NOT REMOVE STUB FROM BALLOT**

OFFICIAL BALLOT - CHARLESTON COUNTY, SC  
DEMOCRATIC PRIMARY  
JANUARY 21, 2025

EMERGENCY/  
PROVISIONAL  
NORTH  
CHARLESTON 17  
B017

No. \_\_\_\_\_

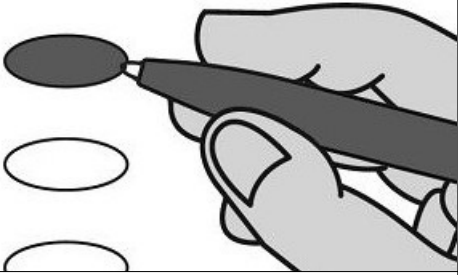
\_\_\_\_\_  
Initials of Issuing Officer

OFFICIAL BALLOT - CHARLESTON COUNTY, SC  
DEMOCRATIC PRIMARY  
JANUARY 21, 2025

EMERGENCY/  
PROVISIONAL  
NORTH CHARLESTON 24  
B018

**Instructions**

**Marking Your Ballot**



- To vote, darken the oval beside your choice using a blue or black pen. Do not make marks outside the oval.
- Vote for one candidate in each contest unless otherwise indicated.
- You do not have to vote in every contest.
- To change or correct your ballot, request a replacement from the election official.

**State House of Representatives  
District 113  
Vote for One**

- Michelle Brandt
- Kim Clark
- Courtney Waters

Howard M. Knapp  
Executive Director  
South Carolina Election Commission

**ATTENTION VOTER: DO NOT REMOVE STUB FROM BALLOT**

OFFICIAL BALLOT - CHARLESTON COUNTY, SC  
DEMOCRATIC PRIMARY  
JANUARY 21, 2025

EMERGENCY/  
PROVISIONAL  
NORTH  
CHARLESTON 24  
B018

No. \_\_\_\_\_

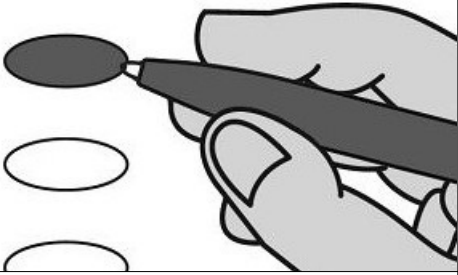
\_\_\_\_\_  
Initials of Issuing Officer

11  
**OFFICIAL BALLOT - CHARLESTON COUNTY, SC  
DEMOCRATIC PRIMARY  
JANUARY 21, 2025**

**EMERGENCY/  
PROVISIONAL  
NORTH CHARLESTON 25  
B019**

**Instructions**

21 **Marking Your Ballot**



- To vote, darken the oval beside your choice using a blue or black pen. Do not make marks outside the oval.
- Vote for one candidate in each contest unless otherwise indicated.
- You do not have to vote in every contest.
- To change or correct your ballot, request a replacement from the election official.

47 **State House of Representatives  
District 113  
Vote for One**

- Michelle Brandt
- 53  Kim Clark
- Courtney Waters

Howard M. Knapp  
Executive Director  
South Carolina Election Commission

**ATTENTION VOTER: DO NOT REMOVE STUB FROM BALLOT**

**OFFICIAL BALLOT - CHARLESTON COUNTY, SC  
DEMOCRATIC PRIMARY  
JANUARY 21, 2025**

**EMERGENCY/  
PROVISIONAL  
NORTH  
CHARLESTON 25  
B019**

No. \_\_\_\_\_

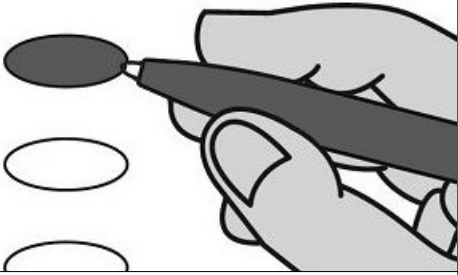
\_\_\_\_\_  
Initials of Issuing Officer

11  
**OFFICIAL BALLOT - CHARLESTON COUNTY, SC  
DEMOCRATIC PRIMARY  
JANUARY 21, 2025**

**EMERGENCY/  
PROVISIONAL  
NORTH CHARLESTON 26  
B020**

**Instructions**

21  
**Marking Your Ballot**



- 40  
41  
42
- To vote, darken the oval beside your choice using a blue or black pen. Do not make marks outside the oval.
  - Vote for one candidate in each contest unless otherwise indicated.
  - You do not have to vote in every contest.
  - To change or correct your ballot, request a replacement from the election official.

47  
**State House of Representatives  
District 113  
Vote for One**

- 54
- Michelle Brandt
  - Kim Clark
  - Courtney Waters

A handwritten signature in cursive script.

Howard M. Knapp  
Executive Director  
South Carolina Election Commission

**ATTENTION VOTER: DO NOT REMOVE STUB FROM BALLOT**

**OFFICIAL BALLOT - CHARLESTON COUNTY, SC  
DEMOCRATIC PRIMARY  
JANUARY 21, 2025**

**EMERGENCY/  
PROVISIONAL  
NORTH  
CHARLESTON 26  
B020**

No. \_\_\_\_\_

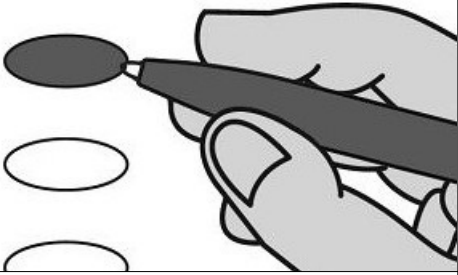
\_\_\_\_\_  
Initials of Issuing Officer

11  
**OFFICIAL BALLOT - CHARLESTON COUNTY, SC  
DEMOCRATIC PRIMARY  
JANUARY 21, 2025**

**EMERGENCY/  
PROVISIONAL  
NORTH CHARLESTON 27  
B021**

**Instructions**

21 **Marking Your Ballot**



- To vote, darken the oval beside your choice using a blue or black pen. Do not make marks outside the oval.
- Vote for one candidate in each contest unless otherwise indicated.
- You do not have to vote in every contest.
- To change or correct your ballot, request a replacement from the election official.

48 **State House of Representatives  
District 113  
Vote for One**

- 51
- Michelle Brandt
  - Kim Clark
  - Courtney Waters

Howard M. Knapp  
Executive Director  
South Carolina Election Commission

**ATTENTION VOTER: DO NOT REMOVE STUB FROM BALLOT**

**OFFICIAL BALLOT - CHARLESTON COUNTY, SC  
DEMOCRATIC PRIMARY  
JANUARY 21, 2025**

**EMERGENCY/  
PROVISIONAL  
NORTH  
CHARLESTON 27  
B021**

No. \_\_\_\_\_

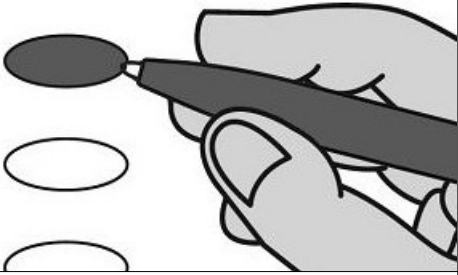
\_\_\_\_\_  
Initials of Issuing Officer

OFFICIAL BALLOT - CHARLESTON COUNTY, SC  
DEMOCRATIC PRIMARY  
JANUARY 21, 2025

EMERGENCY/  
PROVISIONAL  
NORTH CHARLESTON 28  
B022

**Instructions**

**Marking Your Ballot**



- To vote, darken the oval beside your choice using a blue or black pen. Do not make marks outside the oval.
- Vote for one candidate in each contest unless otherwise indicated.
- You do not have to vote in every contest.
- To change or correct your ballot, request a replacement from the election official.

**State House of Representatives  
District 113  
Vote for One**

- Michelle Brandt
- Kim Clark
- Courtney Waters

Howard M. Knapp  
Executive Director  
South Carolina Election Commission

**ATTENTION VOTER: DO NOT REMOVE STUB FROM BALLOT**

OFFICIAL BALLOT - CHARLESTON COUNTY, SC  
DEMOCRATIC PRIMARY  
JANUARY 21, 2025

EMERGENCY/  
PROVISIONAL  
NORTH  
CHARLESTON 28  
B022

No. \_\_\_\_\_

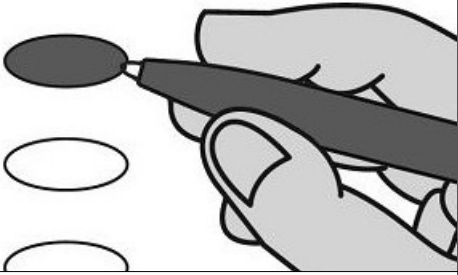
\_\_\_\_\_  
Initials of Issuing Officer

11  
**OFFICIAL BALLOT - CHARLESTON COUNTY, SC  
DEMOCRATIC PRIMARY  
JANUARY 21, 2025**

**EMERGENCY/  
PROVISIONAL  
NORTH CHARLESTON 30  
B023**

**Instructions**

21 **Marking Your Ballot**



- To vote, darken the oval beside your choice using a blue or black pen. Do not make marks outside the oval.
- Vote for one candidate in each contest unless otherwise indicated.
- You do not have to vote in every contest.
- To change or correct your ballot, request a replacement from the election official.

48 **State House of Representatives  
District 113  
Vote for One**

- 53
- Michelle Brandt
  - Kim Clark
  - Courtney Waters

Howard M. Knapp  
Executive Director  
South Carolina Election Commission

**ATTENTION VOTER: DO NOT REMOVE STUB FROM BALLOT**

**OFFICIAL BALLOT - CHARLESTON COUNTY, SC  
DEMOCRATIC PRIMARY  
JANUARY 21, 2025**

**EMERGENCY/  
PROVISIONAL  
NORTH  
CHARLESTON 30  
B023**

No. \_\_\_\_\_

\_\_\_\_\_  
Initials of Issuing Officer